



ANTARCTIC HERITAGE TRUST

— INSPIRING EXPLORERS —



ANNUAL  
REPORT  
2016-2017





# CONTENTS

The Year in Review	2
Achievements	3
In Recognition	5
Conserve	6
Share	14
Encourage	17
Sustain	20
Trust Directory	27
Trust Supporters	28



# THE YEAR IN REVIEW

## ▲ CHAIR'S ADDRESS



It is a privilege to assume the role as Chair of the Antarctic Heritage Trust after serving as an Independent Trustee for four years. 2017 is a significant year for the Trust as it marks 30 years since its inception in 1987.

Much has been achieved in that time thanks to many dedicated people. We look forward to official celebrations.

Our mission to conserve, share and encourage the spirit of exploration is being demonstrated through outstanding work on recent conservation projects including Hillary's (TAE/IGY) Hut being restored in time for the 60th anniversary of New Zealand's Scott Base, the completion of the large Cape Adare artefact conservation programme and another successful Inspiring Explorers' Expedition.

The Trust is connecting with young people around the globe, sharing the world's greatest polar exploration stories and engaging our audience with the Trust's world leading cold-climate conservation work.

Further information and achievements are detailed in this report.

The Trust is very grateful for the support it receives. Particular thanks go to our major supporter, the

New Zealand Government. That support is delivered through Antarctica New Zealand, which provides ongoing critical support of the Trust's activities in New Zealand and Antarctica, and through Vote Arts, Culture and Heritage, which assists in funding the Trust's core administration costs. This means the contributions from all our other sponsors, supporters and members go directly to the Trust's mission.

At a Board level the year in review saw the retirement of Chair, the Rt Hon. Paul East who served 15 years on the Board, including 11 as Chair. On behalf of the Board we thank Paul for his generous service over a long time. You can read more about Paul's contribution on page 5.

This year also saw some changes in governance with US Ambassador Scott Brown taking up his post in late June after Ambassador Mark Gilbert departed earlier in the year. Longstanding Trustee Sir Chris Mace stepped down from his position as an Independent Trustee in September. We welcomed Andrew Coleman, CEO of Heritage New Zealand. My thanks go to my fellow Trustees for their support and service.

Our thanks are extended to our capable Executive Director Nigel Watson and the hard-working staff for their ongoing support and efforts. I am also grateful to all our supporters and stakeholders.

Mark Stewart  
Chair  
27 September 2017



» Inspiring Explorers' Expedition 2017 to Antarctic Peninsula. Left to right: Isobel Ewing, Simon Lucas, Sylvie Admore and William Pike © William Pike.

# ACHIEVEMENTS 2016-2017

- ▲ *Expedition South* — a successful \$1M fundraising campaign to conserve Hillary's (TAE/IGY) Hut
- ▲ Conservation of Hillary's (TAE/IGY) Hut completed for New Zealand Scott Base's 60th anniversary, and almost 600 artefacts conserved
- ▲ 1500 artefacts conserved from Cape Adare collection
- ▲ 118-year-old watercolour by Dr Edward Wilson discovered in Cape Adare artefacts
- ▲ Inspiring Explorers completed a successful ascent of Mt Scott on the Antarctic Peninsula
- ▲ The short film *Mt Scott* premiered at the New Zealand Mountain Film Festival
- ▲ The Trust supported LEARNZ's virtual field trip to Antarctica with more than 5800 New Zealand students connected to Antarctic content
- ▲ Strong growth across all digital platforms and launch of electronic newsletter
- ▲ Staff worked with UK Antarctic Heritage Trust at Horseshoe Island on the Antarctic Peninsula
- ▲ Secured a commission from ongoing sales of Whyte & Mackay's latest whisky product *Shackleton*
- ▲ Antarctic Youth Ambassador partnership programme delivered
- ▲ Antarctic Conservation Ambassador initiative launched
- ▲ Annual conservation programme completed at Ross Island historic huts



» The freshly painted Hillary's (TAE/IGY) Hut in 2017. © Tim McPhee.



## ▲ EXECUTIVE DIRECTOR'S REPORT



The Trust has enjoyed a year full of exciting activities and significant milestones. On the conservation side the team completed a major programme of conservation at Hillary's (TAE/IGY) Hut at Scott Base to coincide with the

60th anniversary of New Zealand's presence in Antarctica. The project included the conservation of both the building and almost 600 artefacts. The conservation work and a selection of artefacts are profiled online.

The conservation programme followed an extensive fundraising drive, which raised a million dollars for this important piece of New Zealand history. *Expedition South* was an adventure that saw our team drive vintage Ferguson tractors through New Zealand raising funds and profile for this iconic legacy.

The New Zealand Minister for Arts, Culture and Heritage Hon. Maggie Barry visited Antarctica in November and announced support for this project.

This year saw the passing of Bill Cranfield, a legend from the original Trans-Antarctic Expedition. He will be missed. Randal Heke, the foreman who led the construction of Hillary's (TAE/IGY) Hut in 1957, was awarded the New Zealand Antarctic Medal this year; a fitting tribute after 60 years.

Our international team of conservators had an intensive year in Christchurch conserving the artefact collection temporarily removed from Cape Adare in Antarctica. The results were stunning and along the way the world's media were hooked by the story of the Wilson watercolour uncovered after more than a century.

Our second Inspiring Explorers' Expedition was a great success with our team climbing Mt Scott in Antarctica. I was grateful for the opportunity to lead the expedition and to see the young participants connect with and embrace the spirit of exploration. One of the expedition outcomes was the excellent short film, *Mt Scott*, which premiered a few months after the expedition returned home.

Our relationship with our sister trust UK Antarctic Heritage Trust grew even closer in the year with our Programme Manager, Al Fastier, assisting conservation efforts on the Antarctic Peninsula.

Financially we have had a great year with a surplus, thanks largely to the generosity of donors contributing to the conservation of Hillary's (TAE/IGY) Hut.

The Board had a change in Chair this year and I record my sincere thanks to departing Chair Rt Hon. Paul East for his support and guidance over many years. We are fortunate to have Mark Stewart as our new Chair. My thanks go to Mark, the Board and our high performing staff that ensure the Trust strives for and continues to deliver outstanding results, year on year. We welcome our new General Manager - Operations and Communications, Francesca Eathorne, to the Trust. Our small team continues to deliver exceptional results and we are excited about the opportunities ahead.

Finally, thanks to all the supporters of the Trust's mission that enable us to deliver against our vision of 'Inspiring Explorers'.

I hope you enjoy reading about the Trust's achievements.

Nigel Watson  
Executive Director  
27 September 2017

## IN RECOGNITION

### ACKNOWLEDGING PAUL EAST FOR 15 YEARS OF SERVICE

▲ **Venturing to Antarctica with Sir Edmund Hillary on his final visit to the Ice was a special experience for Rt Hon. Paul East CNZM QC, who retired as Chair of the Antarctic Heritage Trust in September 2016, and from the Board in May 2017.**

"The trip was in 2007 to commemorate the 50th anniversary of Scott Base and it was a great thrill to travel to the Antarctic with a boyhood hero. Ed did an outstanding interview on the steps of Robert Falcon Scott's Hut, which caught the global media's attention and ultimately helped secure millions of pounds being donated by the British towards the conservation of the building."

Paul joined the Board of Antarctic Heritage Trust in 2002 following a distinguished career in the legal, parliamentary and diplomatic services. He held a number of Cabinet posts during his political career including Minister for State Services, Defence, Corrections and Crown Health Enterprises; was a Leader of the House, served as the country's Attorney General for seven years, and was later appointed the New Zealand High Commissioner to the UK.

"I've always been interested in the Antarctic and visited twice before I joined the Trust, once as a backbench MP, and again when I was Minister of Defence."

Paul was a dedicated advocate for the Antarctic Heritage Trust throughout his time on the Board and as Chair, making a significant contribution in all areas of operations.

He says heritage conservation plans were underway for the Antarctic huts when he joined the Board, with fundraising in full swing by 2005, when he took over as Chair from Rob Fenwick.

"Rob and our first class Executive Director Nigel Watson, who is still with the Trust, laid a solid base to work from. It has been immensely satisfying and a marvellous thrill for our team to complete the restoration work at Scott, Shackleton and Hillary's Huts, and to save literally thousands of important artefacts."



» Rt Hon. Paul East visiting Shackleton's grave on South Georgia Island in 2015.

Another highlight of Paul's tenure was visiting South Georgia with Princess Anne in 2015 to mark the 100th anniversary of Shackleton's death.

"Princess Anne is Patron-in-Chief of the UK Antarctic Heritage Trust and was travelling to South Georgia to visit Shackleton's grave and open a museum. She invited eight people to go with her and I was lucky enough to be one of them."

Achievements aside, Paul says the people he has worked with at the Trust over the years have also made his experience so memorable.

"Credit always goes to the Executive Director and Chair, however there are so many wonderful people I have worked with over the years who have dedicated hours and hours of voluntary work to these projects and deserve special recognition. All have contributed to the rich and rewarding time I spent serving the Trust."

Executive Director Nigel Watson says, "Paul has made a significant contribution to the Trust over the past 15 years. We are incredibly grateful for his passion for Antarctica and our work, his thoughtful chairmanship, sage advice and the tremendous commitment he has made to the Trust over many years."





# CONSERVE

▲ **Antarctica is the only continent on Earth where humans' first dwelling still stands. Antarctic Heritage Trust cares for the expedition bases in the Ross Sea Region built by Antarctic explorers Borchgrevink, Scott, Shackleton and Hillary. The Trust's Ross Sea Heritage Restoration Project is a multi-year, multi-site project to conserve these bases and the 20,000 items left behind.**

The simple buildings are testament to the power of place and the spirit of exploration. They bear witness to the triumphs, tragedies and exploits of those who sheltered within their walls and who sought to explore the 'great, white silence'.

The Trust is the global leader in cold-climate heritage conservation. The Trust is saving in situ the buildings and artefacts that were in danger of being lost after a century of extreme environmental conditions.

The process of conserving an historic site that is in the Antarctic and listed by the Antarctic Treaty System is challenging. There have been more than 70 experts

from 14 countries in the Trust's specialist conservation teams since the Project's inception.

These dedicated people deliver innovative solutions to the conservation demands posed by these internationally important heritage sites in one of the most challenging environments on earth. The Trust is supported logistically in Antarctica by New Zealand Crown entity, Antarctica New Zealand and gratefully acknowledges its support.

Project milestones to date include the completion of major conservation work on the three Ross Island 'heroic era' bases and Hillary's (TAE/IGY) Hut as well as conservation of more than 18,000 objects from expeditions led by Captain Robert Falcon Scott, Sir Ernest Shackleton and Sir Edmund Hillary.

The Trust's conservation focus is now on multi-year conservation work at Carsten Borchgrevink's expedition huts at Cape Adare and continuing essential ongoing maintenance work at the four Ross Island bases.

» Above: Programme Manager – Artefacts Lizzie Meek looking at an unconserved newspaper from Cape Adare. © Fairfax Media/The Press.



## ▲ WORKING ACROSS ANTARCTICA

In February the Trust's Programme Manager Al Fastier assisted the UKAHT in completing its building survey of Hut Y, Horseshoe Island on the Antarctic Peninsula. With NZAHT's expertise and experience gained during the Ross Sea Heritage Restoration Project, the Trust is pleased to work with UKAHT sharing learnings from our own challenging conservation projects.

To help understand the sequence of building modifications, the project architects researched the history of the hut and compiled a book of historic photographs, which helped the on site team to understand changes and damage to the hut as well as the building's current configuration. The team had many a happy and productive evening in the mess tent reviewing these photographs, including discussing the changes over time.

An important part of the scheduling process was taking samples to be analysed in Britain, for example, timber samples used to identify the wood species, growth rate, size and number of knots so that repair timbers can be matched.

At the completion of the proposed Horseshoe conservation programme the buildings will be structurally sound to withstand the harsh Antarctic environment, and weathertight to safeguard the artefact collection within. The information collected will be the foundation to successfully conserve the site so future generations can be inspired by Britain's Antarctic history.

» Left to right: Sophie Rowe, Michael Powell, Liesl Scherthanner and Al Fastier © Sophie Rowe.

## MONITORING AND MAINTENANCE PROGRAMME

Each of the 'heroic era' bases on Ross Island has an extensive monitoring and maintenance programme that the Trust's team carries out annually to ensure the bases' legacy remains for future generations.

The purpose of the maintenance programme is to examine the durability of the building repairs and artefact conservation treatments that have been carried out. It also identifies and rectifies any minor maintenance issues before they develop and monitors the overall condition of the building structure, including the interior microclimate.

The annual maintenance programme at the historic bases includes a formal building inspection, general maintenance as required and snow removal. A comprehensive maintenance register provides a record

of all work undertaken. A specialist design team is consulted with, when required, to develop long term solutions for more complex maintenance issues.

Data logger information on temperature and relative humidity is collected at each historic site. The Building Research Association New Zealand (BRANZ) analyses this environmental data. Land Information New Zealand undertakes regular building surveys to identify changes in the building structure. There is also an inspection of the conservation treatments on a selection of artefacts of different material types.

This robust maintenance programme enables the Trust to check the often innovative methodology behind the Trust's work and to measure its success.





## ▲ BORCHGREVINK'S HUTS CAPE ADARE

The base established by Norwegian explorer Carsten Borchgrevink at remote Cape Adare for the British Antarctic *Southern Cross* Expedition 1898-1900 was the first building in Antarctica. It is the only remaining example of humanity's first building on any continent.

Cape Adare poses a number of logistical challenges, not least of which are its isolation and the fact that the buildings are located in the middle of the world's largest Adélie penguin rookery. Over the 2015-2016 season, with support from Antarctica New Zealand, and with good planning and a favourable weather window, the Trust was able to successfully access Cape Adare for the first time in a decade and begin its multi-year conservation programme of work.

The Trust's two conservation managers and a Norwegian heritage carpenter undertook emergency repairs to the accommodation building, scheduled future carpentry work and relocated most of the artefact collection – almost 1500 objects – temporarily to New Zealand for conservation.

With project funding support from the Norwegian Government, the Trust continues to work closely with Antarctica New Zealand on project planning for the conservation of the huts. Next, a small team hopes to travel to Cape Adare to establish a temporary camp, which will provide a base to allow the huts to be conserved in future seasons.

The field camp that the team will live in requires a high degree of innovation and logistics due to the extreme environment at Cape Adare. Specialist rigid shell accommodation is being designed using water tanks, and the pioneering polar pods will be used again.



« From top: Borchgrevink's Huts; bottles conserved; Ciarán Larvelle conserving an object; conservators working in the lab at Canterbury Museum. © AHT.

## ARTEFACT CONSERVATION

An international team of conservation specialists employed by the Trust were based at New Zealand's Canterbury Museum's specialist facilities to conserve the Cape Adare artefact collection that the Trust was permitted to bring back to New Zealand temporarily. Conservators included Lizzie Meek (Programme Manager – Artefacts), Josefin Bergmark-Jiménez, Sue Bassett, Nicola Dunn-Stewart, Ciarán Larvelle and Stefanie Stott.

The collection includes a range of foods, metal objects, textiles and paper items. Conservation work was completed on the items mid-2017, with one highlight being the discovery of an almost perfectly preserved 118-year-old watercolour by Dr Edward Wilson (see page 16 for full story).

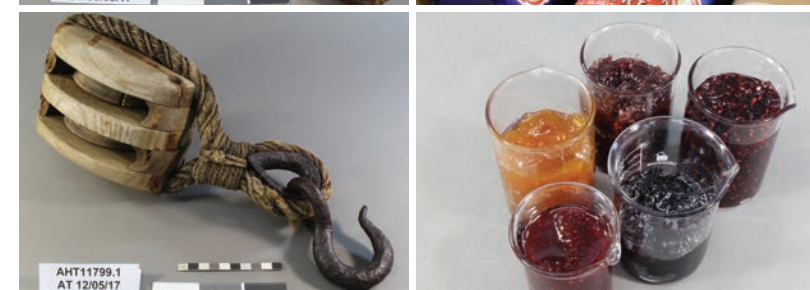
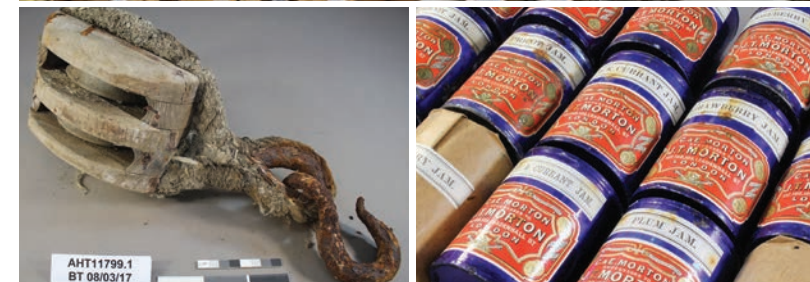
"It is particularly challenging to conserve objects from a historic site you have not been able to visit," says Lizzie Meek, Programme Manager – Artefacts.

"Fortunately for the Trust, most of our conservators on this project had visited the expedition bases at Cape Evans, Cape Royds and Hut Point, so had an excellent understanding of the site context and environmental conditions the objects are from. Many of the Cape Adare objects had significant damage caused by exposure to penguin guano, a challenge our team rose to with good humour and perseverance.

We had some quite spectacular before and after results, given the severe nature of corrosion and/or guano encrustation suffered by some objects.

Despite uncovering more artefacts than we thought we initially had, the team managed to finish all of the work on time, and to a high standard. Discoveries like the watercolour were definitely a morale booster!"

» From top: The Trust's international team of experts celebrate conserving 1500 artefacts. Left to right: Josefin Bergmark-Jiménez, Sue Bassett, Nicola Dunn-Stewart and Ciarán Larvelle. A ship's block before and after treatment; jams found at Cape Adare, Dr Edward Wilson's watercolour 'Tree Creeper'. © AHT.



## BUTTER POINT AND INEXPRESSIBLE ISLAND ARTEFACTS

Alongside the Cape Adare artefact conservation programme a number of items from Butter Point/Inexpressible Island were also treated by the New Zealand-based team at Canterbury Museum.

Although smaller in number (291), the artefacts from the depots at Butter Point (used by both Scott's and Shackleton's expeditions) and Inexpressible Island (Scott's Northern Party), were rich in stories and interest. Among the artefacts were blocks of Fry's Caracas chocolate,

tins of Beauvais pemmican, and a beautifully preserved Nansen cooker and pannikin set, some of which still had the remnants of food from the last time they were used.

The objects from Butter Point have been permitted by the New Zealand Government to be returned to the stable bays at Cape Evans, as their safety cannot be assured back at the depot site. Those from Inexpressible Island will be housed in a purpose-built display case at Scott Base.





## ▲ HILLARY'S (TAE/IGY) HUT, SCOTT BASE

On Friday, 20 January 2017 the residents of New Zealand's Scott Base celebrated the base's 60 year anniversary by taking a tour through the recently restored Hillary's (TAE/IGY) Hut. Antarctic Heritage Trust's team of 12 worked more than 5700 hours on the major conservation of the building over the summer season. The work started in November 2016 following the Trust's successful fundraising campaign to save the site, the legacy of the Commonwealth Trans-Antarctic Expedition (1955–1958).

The New Zealand Government and Antarctica New Zealand asked the Trust to take on the care and conservation of the hut, including raising funds for its restoration and long term maintenance.

Extensive planning and research was undertaken by the Trust in preparation for the conservation work. Originally designed to last only 20 years, after 60 years the building had a number of issues including deteriorating asbestos wall and ceiling linings, a leaking roof, snow ingress, and melt water under the foundations. Care was taken to retain and reinstate original building materials after the asbestos was removed. Where new material was essential, modern

material was chosen that was as close as possible to the original finish and appearance. The 1980s pitched roof addition was removed and the original flat roof structure was reinstated. Exterior vents and flues were repaired and replaced.

The team consisted of Trust staff Al Fastier (Programme Manager) and Lizzie Meek (Programme Manager – Artefacts) along with contractors Geoff Cooper and Doug Henderson, Antarctic Youth Ambassador Annika Andresen and Antarctic Society volunteers Gus Anning and Tony Thrupp. Sue Bassett and Ciarán Larvelle joined the team as conservators to work on almost 600 artefacts.

Programme Manager Al Fastier says, "The extreme weather conditions and cold temperatures makes exterior repairs to the building challenging and, of course, you can't pop down to your local hardware shop to buy additional materials."

Painting in sub-zero conditions was a challenge, with wind chill or storm conditions often rendering outside work impossible.

« From top: Aurora over Hillary's (TAE/IGY) Hut taken in Winter 2017. © Martin Meldrum.

The Trust worked closely with Dulux New Zealand to match original TAE-era paint samples and colour swatches, before repainting the exterior and interior of the building in the bold shades of the 1950s.

With persistence and cold fingers, the Trust's team achieved a remarkable transformation, even using brushes rather than rollers to achieve a 1950s finish 'as the men would have done it'.

The Trust won the International category of the Dulux Colour Awards for the hut's retro colour scheme.

Today, in amongst the almost exclusively modern, green-painted buildings of Scott Base, the bright colours of Hillary's (TAE/IGY) Hut immediately draw attention to it as a unique and very special part of the base's history.

## ARTEFACT CONSERVATION

Hillary's (TAE/IGY) Hut houses almost 600 artefacts, some from the TAE era, and some from the formative years of the New Zealand Antarctic programme. All artefacts were individually catalogued, photographed, and where necessary given conservation treatment by the Trust's team of three conservators.

The modern materials of many of the artefacts, including plastics and painted surfaces, while generally in better condition than objects from the 'heroic era', posed some treatment challenges for the team around stabilisation and adhesives.

Highlights included a copy of the hut plans presented to Ron Mitchell and signed by all expedition members, the conservation of both cast iron stoves inside the hut, and the removal of paint from many of the fixtures around the hut, revealing original makers plates and surfaces.

Programme Manager – Artefacts Lizzie Meek comments, "Thoughtful donations from a number of descendants of the original TAE/IGY teams have brought new character and detail to the artefact collection and the building, and we hope there may be further donations in the future.

"As the building interior was almost completely dismantled during asbestos remediation, we were excited to find some previously unknown artefacts tucked away behind cabinetry, including a pipe, cutlery and a serviette holder."

» From top: Interior of the hut after conservation. © Jane Ussher. Tony Thrupp painting the interior; Geoff Cooper working on the roof; various artefacts – film canister, goggles, TAE-branded playing cards featuring Sir Edmund Hillary and Dr Vivian Fuchs; chocolate bars. © AHT.







## ▲ 'HEROIC ERA' HUTS

The 'heroic era' huts of Scott and Shackleton have undergone comprehensive conservation work since 2002 when the Ross Sea Heritage Restoration Project was launched. Every season the Trust's team continues to monitor the condition of the buildings and their artefacts and carries out routine maintenance work.

### SCOTT'S HUT, CAPE EVANS

In 2008, after an international fundraising appeal, the Trust began a major programme of conservation work to save the Cape Evans Hut. The building is forever associated with Captain Scott's British Antarctic *Terra Nova* Expedition (1910–1913) and his attainment of the Geographic South Pole, on which he and his polar party lost their lives returning to Cape Evans.

Conservation comprised a five year carpentry programme, which included mitigating the efforts of ice and snow build up and weatherproofing the building. The artefact conservation programme took seven years to complete over which time 11,561 individual objects left behind by Scott's expedition and Shackleton's Ross Sea Party (1914–1917), were conserved.

Key discoveries included George Murray Levick's photographic notebook and the never-before-seen photographic negatives from the Ross Sea Party, taken from the deck of the *Aurora* as it steamed toward Ross Island during January 1915.

### SCOTT'S HUT, HUT POINT

Captain Scott's first expedition base at Hut Point established for the National Antarctic Discovery Expedition (1901–1904) remains evidence not only of scientific endeavour but also of the hardships endured by the hut's later occupants, particularly Shackleton's Ross Sea Party.

Over 2013–2014 the Trust completed an ambitious two-year programme of building conservation and conserving the 535 artefacts. The major programme of work included installing a subterranean dam around the building, straightening and stabilising the hut, removing ice accumulation from under the floor, drying out the

interior walls, and repairing and reinstating veranda wall panels and interior doors.

A key part of the conservation work was the removal of contemporary building materials, including the stove flue, and their replacement with historically accurate material. The ceiling, which had dropped half a metre, was carefully lifted, the modern glass-work replaced, textiles that divided the hut were re-hung and the blubber stove was conserved.

### SHACKLETON'S HUT, CAPE ROYDS

Ernest Shackleton's only Antarctic expedition base was established at Cape Royds as part of the British Antarctic *Nimrod* Expedition (1907–1909).

Between 2004 and 2008 the Trust completed a comprehensive programme of conservation on the building and the 6106 artefacts that make up the collection.

The initial priority, as with all the buildings, was to mitigate the effects of snow and ice build up and to weatherproof the building.

Following the departure of Shackleton's expedition in 1909, two other 'heroic era' expeditions briefly occupied the building and over subsequent decades many artefacts were removed. Conservators used original photos and diaries to create a layout that more accurately reflects the occupation by Shackleton's original expedition.

By far the most famous artefact on site is 'Shackleton's whisky'. In 2010, Trust conservators recovered three crates of whisky and two crates of brandy from under the expedition base, the bottles still in their original straw and paper encasings. A global wave of interest ensued, highlighting the story of the *Nimrod* Expedition and the Trust's conservation efforts.

Scottish company Whyte & Mackay recreated the whisky with some of the profits from the original edition 'The Journey' and second edition 'Discovery' coming to the Trust. The Trust will receive a commission on the sale of the Whyte & Mackay homage to the original whisky. Called 'Shackleton' it is being progressively released globally in 2017.



» From top: Scott's Hut, Cape Evans; Scott's Discovery Hut, Hut Point; Lead carpenter Gordon Macdonald working in Scott's Hut, Hut Point; Nicola Dunn-Stewart inspects a pair of leg warmers in Scott's Hut, Cape Evans. © Alasdair Turner Photography.

» From top: Shackleton's Hut, Cape Royds; Murray Levick's notebook; Lizzie Meek, Programme Manager - Artefacts in the laboratory at Canterbury Museum, with the whisky in its paper and straw encasings; the latest whisky from Whyte and Mackay 'Shackleton' launched in 2017. © AHT.



# SHARE



▲ **Sharing the spirit of exploration is a key part of the Trust's mission and has been a focus over the last year. The strategy includes sharing the world's greatest polar exploration stories, partnering with others to showcase the Trust's intellectual property and working on projects that help connect people with polar exploration.**

**The highlights of the year included:**

## EXPEDITION SOUTH

The Trust conceived and undertook *Expedition South*, a campaign to raise funds and awareness of the Trust's work to support the conservation of Hillary's (TAE/IGY) Hut. *Expedition South* was a quintessential Kiwi journey that honoured the original Hillary-led expedition from Scott Base to the South Pole by Ferguson tractor.

Two vintage TE-20 Ferguson tractors along with a modern Massey Ferguson tractor set off from the Hillary Trail at Piha, New Zealand. Their destination was Aoraki Mt Cook some 2000 kilometres 'down the road' in sight of the re-named Hillary Ridge. In touring the country the tractors covered the same distance that Sir Ed's original Antarctic party did on their epic tractor journey to the South Pole.

Enroute the team visited many communities and sites associated with Sir Ed Hillary's life. They took part in 30 events and visited 10 schools with 50 schools also following the journey online. The expedition raised over NZD\$100,000 towards our million dollar target.

Nigel Watson says, "Hillary's (TAE/IGY) Hut is a valuable slice of Kiwi history that could have been lost. Now, thanks to thousands of New Zealanders, it will be there to inspire future generations to explore our great outdoors like Sir Ed did."

The base wouldn't have been saved without the help of New Zealanders, many who donated 'a fiver to the driver' as the tractors passed through their city or town.

The Trust is very grateful to its supporters who donated to the campaign, including the New Zealand Government who made a generous contribution with the final \$180,000 of support announced by the Minister for Arts, Culture and Heritage, Hon. Maggie Barry, in Antarctica in November 2016. The Trust acknowledges the Environment and Heritage Committee of NZ Lottery Grants Board, which approved a \$260,000 grant in the financial year for the project.

The Trust collaborated with education provider LEARNZ to promote their Antarctica virtual field trip

and through this programme *Expedition South* was a way for more than 5800 New Zealand students to connect with Antarctic history.

Alongside PR partner Great Scott! Communications and Christchurch International Airport, the Trust received a highly commended acknowledgement for its *Expedition South* campaign at the national Public Relations Institute New Zealand awards.

The Trust gratefully acknowledges all its sponsors, donors and friends who supported *Expedition South* and helped make it a success.

## ANTARCTICA: WHILE YOU WERE SLEEPING

The Trust hosted the 'Antarctica Zone' at the *Antarctica: while you were sleeping* event as part of Auckland Arts Festival. Produced by New Zealand visual artist Joseph Michael the event saw Auckland Museum's iconic building become the canvas for a full-scale 360-degree projection of a majestic Antarctic iceberg, named 'Ernest' after Sir Ernest Shackleton.

This free, fully immersive visual and audio experience catering to an audience of all ages, was a New Zealand first, and was the largest project of its kind in the Southern Hemisphere attracting more than 20,000 visitors over two nights.

Staff enjoyed sharing their expertise and the Trust's work. A popular Antarctic competition encouraged learning about Antarctica's history of exploration, climate change, the Southern Ocean and its wildlife. The Inspiring Explorers team were also present, sharing the story of their expedition climb to Mt Scott on the Antarctic Peninsula.



» From top: At the finish line at Aoraki Mt Cook for 'Expedition South'; Al Fastier leading the tractor journey 'Expedition South' to raise awareness and funds for Hillary's (TAE/IGY) Hut; Inspiring Explorer Simon Lucas shares his story and children fill in the Antarctic competition form at the 'Antarctica: while you were sleeping' exhibition.

« Visitors enjoy 'Ernest' the 360 degree iceberg installation at Auckland War Memorial Museum.



## DIGITAL AND SOCIAL MEDIA

Social media remains a key way for the Trust to share its stories with its engaged global audience. The Trust's social media channels have experienced strong growth over the past 12 months.

The Trust also launched its newsletter *The Explorer* electronically enabling people to keep up to date with the Trust's news. While the newsletter remains available in print, providing it electronically has allowed the Trust to connect with many new supporters around the world.

Popular stories on the website have included photo galleries of the restoration of Hillary's (TAE/IGY) Hut and iconic artefacts, as well as a time-lapse video showing the exterior restoration of Hillary's (TAE/IGY) Hut (produced with Antarctica New Zealand). The Dr Edward Wilson watercolour was also very popular with hundreds of thousands of video views.

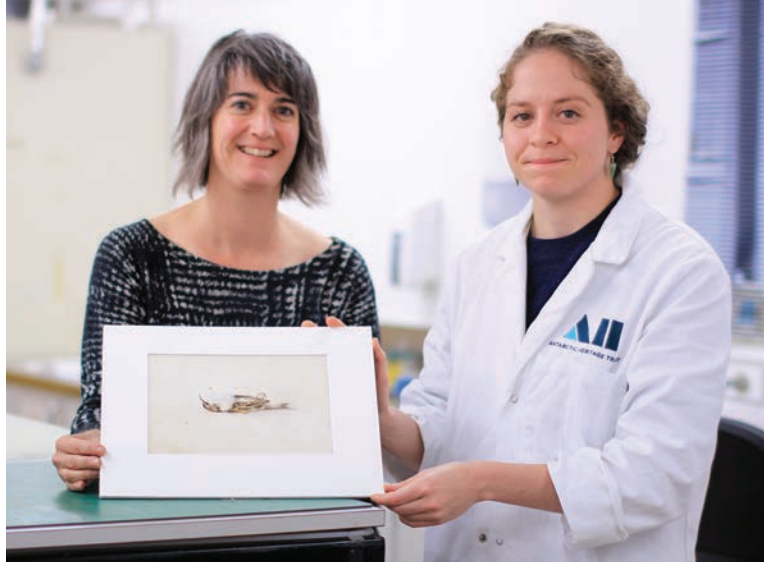
## SHARING EXPERTISE

Trust staff continued to share their expertise this year presenting at the Sir Peter Blake Trust Leadership Week, Victoria University, University of Canterbury Gateway Antarctica programme, and the Royal New Zealand Navy/Antarctic Society 'Heroic Era' Conference. Executive Director Nigel Watson and Inspiring Explorer Tom McTavish (2015) gave the keynote speech at the annual Canterbury Antarctic Society dinner. A public lecture was delivered by Executive Director Nigel Watson in Christchurch on 'The World's Most Extreme Conservation Project'. Programme Manager – Artefacts Lizzie Meek presented on the Trust's can collection at a conference in Switzerland. The Trust holds the world's largest single can collection.

Conservators at the lab at Canterbury Museum hosted a number of groups throughout the year, sharing their unique environment and the stories behind the conservation of the Cape Adare artefacts.

The New Zealand delegation provided a paper for the Antarctic Treaty nations on the conservation achievements by the Trust supported by the government at Hillary's (TAE/IGY) Hut, a designated Historic Site under the Antarctic Treaty System.

The team worked with local education provider LEARNZ to provide content for a new series they are producing, as well as took part in a mixed media project, supported Jane Ussher's latest photography at Scott Base, and guided a private expedition at Discovery Hut.



## PAINTING FOUND IN ANTARCTICA

The Trust discovered an almost perfectly preserved 118-year-old watercolour painting among dust and mould covered papers found in an historic hut at Cape Adare, Antarctica.

After extensive research the Trust confirmed the watercolour was painted by Dr Edward Wilson, one of the polar party, who died with Captain Robert Falcon Scott on their return from the South Pole in 1912.

Antarctic Heritage Trust Paper Conservator Josefin Bergmark-Jiménez found the painting. She was cleaning a paper portfolio collected from a bunk in one of two historic huts the Trust is to restore at Cape Adare.

"I opened it and there was this gorgeous painting ... I got such a fright that I jumped and shut the portfolio again. I then took the painting out and couldn't stop looking at it – the colours, the vibrancy, it is such a beautiful piece of work. I couldn't believe it was there."

The painting is labelled '1899 Tree Creeper' and has the initial 'T' on it. It depicts a tree creeper bird specimen.

The Trust's Programme Manager – Artefacts, Lizzie Meek says it wasn't immediately clear who the artist was given that two expeditions had based themselves at Cape Adare.

"The Cape Adare Huts were built by Norwegian Carsten Borchgrevink's expedition in 1899 and later used by Captain Scott's party in 1911. We knew the artist was likely to be among the men on those expeditions," says Lizzie.

Lizzie says Dr Wilson was a remarkable man, who was a talented painter as well as a scientist and medical doctor, and an integral member of both of Scott's expeditions to the Ice.

Josefin is not surprised the painting survived in such excellent condition.

"Watercolour paintings are particularly susceptible to light so the fact this work has spent more than a hundred years tightly packed between other sheets of paper in completely dark and cold conditions is actually an ideal way to store it."

The story generated global media interest with more than 200 stories published across 32 countries. The video was viewed hundreds of thousands of times and social media content was shared over 13,000 times within the first week. The Trust received many emails from supporters around the world thrilled about this incredible discovery.

» Lizzie Meek and Josefin Bergmark-Jiménez with the watercolour. © AHT.

# ENCOURAGE



▲ In furthering the Trust's mission to conserve, share and encourage the spirit of exploration we have focused on encouraging young people to engage with the legacy the Trust cares for. This year we delivered these experiences through our second Inspiring Explorers' Expedition and our ongoing Antarctic Youth Ambassador partnership. We also launched a new Conservation Ambassador role to enable an early career conservator to work on the project with the team in Antarctica.

## ▲ INSPIRING EXPLORERS' EXPEDITION 2017, MT SCOTT, ANTARCTIC PENINSULA

**The team for our second Inspiring Explorers' Expedition was selected from almost 100 applicants from around New Zealand. This programme was created to inspire people to explore and to challenge them to share the spirit of exploration with others. The calibre of applicants was exceedingly high.**

The team travelled to the Antarctic Peninsula in February to attempt a guided ascent of the heavily glaciated 880m peak Mt Scott. Through this expedition these young people both celebrated and, in their own way, embraced the thread of exploration of the famous early polar explorers, including Robert Falcon Scott, for whom Mt Scott is named.

It was a privilege for our Executive Director, Nigel Watson, to lead these inspiring young people to help them connect with the early polar explorers and Antarctica's rich history. All of them challenged themselves in the true spirit of exploration.

Given we care for Scott's legacy through the conservation of his bases at Hut Point and Cape Evans it was poignant for the team to reflect on explorers like Scott and the differences in travel, conditions and gear that his team faced.

It was satisfying to achieve our goal of an ascent of Mt Scott, particularly given the challenges at times of route finding. Thanks to our Kiwi guides Sean and Kevin, and the partnership with One Ocean Expeditions that made this so successful.

Each of our team has now delivered a comprehensive outreach programme. Their mission was to inspire people through sharing their adventure and encourage others to explore in a way that's meaningful for them.

Each Inspiring Explorer delivered a comprehensive outreach programme sharing their story through presentations to schools and community organisations, photography, social media, print and broadcast media, blogging and short film.

» On the summit of Mt Scott, Antarctic Peninsula. Left to right: William Pike, Isobel Ewing, Sylvie Admore, Kevin Nicholas, Nigel Watson, Sean Brooks, Simon Lucas. © William Pike.





*"I admire the early polar explorers because when we went to Whalers Bay, we got to see all the old structures and get a glimpse of what it was like back in the day. I can't imagine how hard it must have been for the early polar explorers to navigate the constantly moving icebergs in their wooden boats. To traverse the terrain with no maps or any way of knowing what lay ahead must have been incredibly daunting. It was definitely humbling for me."*

**SIMON LUCAS** (Zoologist and Film-maker)



*"Standing on top of Mt Scott ... I was overwhelmed. I'd summited my first mountain in the last great wilderness on Earth, and yet there wasn't a breath of wind and the sun was shining. It was such a tranquil moment in an incredibly harsh place. I think it was pretty emotional for everyone, the culmination of all that apprehension about whether we'd be able to do it. I managed to grab the satellite phone and do a live cross back to the 'Your Sunday' show on RadioLIVE, which was totally surreal and a huge career highlight."*

**ISOBEL EWING** (Journalist)



*"Standing on top of Mt Scott I reflected back to 10 years ago when I was lying on a hospital bed with my leg freshly amputated below the knee, and would never have imagined I could make it to the top of a mountain in Antarctica. I didn't expect to be able to walk on my leg for 18 hours as the longest trip I had ever done was 10 hours. Achieving this has now opened up a world of possibilities for me. I'm really proud of myself for what I've achieved over the last 10 years, and grateful to the people around me who have helped me get to where I am."*

**WILLIAM PIKE** (Director of William Pike Challenge Award and Inspirational Speaker)



*"I've been inspired to reinforce my commitment to the continued conservation of Antarctica. It is definitely something to be conserved and preserved, and I feel strongly it should be protected and kept for future generations."*

**SYLVIE ADMORE** (Officer, Royal New Zealand Air Force)



## ANTARCTIC CONSERVATION AMBASSADOR

▲ In May the Trust launched the new role of Conservation Ambassador, which is an opportunity for an emerging conservation professional (within the first five years of their career) to join the team in Antarctica for part of the season.

The Conservation Ambassador will gain unique first-hand experience of preserving a heritage site

in situ, in challenging uncontrolled conditions. This experience provides a different approach to lab-based conservation, and has the potential for a life-changing, positive impact on the conservator's future practice.

They will deliver an outreach programme sharing their story, lessons learned and the Trust's work.

## ANTARCTIC YOUTH AMBASSADOR

▲ The Trust continued its long-standing partnership with Antarctica New Zealand and Sir Peter Blake Trust bringing an Antarctic Youth Ambassador, Annika Andresen, to be part of the Trust's conservation team on Ross Island. Annika is studying a Masters in Architecture at the University of Auckland. She worked closely with the team on the conservation of Hillary's (TAE/IGY) Hut and the maintenance and monitoring work programmes at the three Ross Island 'heroic era' huts. Annika shared her experiences via social media, blogs and video.

Annika says, "This amazing opportunity was the best history lesson, building apprenticeship and greatest adventure I could have ever imagined. Being able to share my passion and the knowledge I gained was invaluable, allowing me to combine my love for adventure and my interest in architecture. Antarctica has always been a dream of mine, and to be able to work with such inspiring people was life-changing. Right from the beginning, taking my first steps on the ice to hugging everyone goodbye in the locker room, that smile never left my face."





# SUSTAIN

## ANTARCTIC HERITAGE TRUST FINANCIAL STATEMENTS

FOR THE YEAR ENDED 30 JUNE 2017

### CONTENTS

Entity Information  
Statement of Revenue and Expenses  
Statement of Financial Position  
Statement of Changes in Net Assets/Equity  
Statement of Cash Flows  
Statement of Accounting Policies  
Notes to the Financial Statements  
Auditor's Report

### ENTITY INFORMATION

#### Type of Entity and Legal Basis

Antarctic Heritage Trust was incorporated in New Zealand on 8 October 1987 under the Charitable Trust Act 1957 (registration number 341412) and registered as a charitable entity on 8 May 2008 under the Charities Act 2005 (registration number CC24071).

#### Purpose and Mission

The Trust's vision is 'Inspiring Explorers'.  
The Trust's mission is to conserve, share and encourage the spirit of exploration.

#### Entity Structure

The Trust deed states the Board shall consist of not less than eight and not more than fourteen persons, and is to include senior Government representatives from Britain, Ireland, United States and New Zealand, heritage and polar agencies and Independent Trustees chosen for their relevant skills, experience and perspective.

The Trust is governed by a Board of Trustees, with management of the Trust delegated to an Executive Director and supported by an executive team in Christchurch and international conservation teams of specialists.

The Board of Trustees meet throughout the year. Board sub-committees are established to assist Trustees to carry out their responsibilities. The Trust's office is located in the International Antarctic Centre in Christchurch, New Zealand, co-located with the New Zealand, United States, Korean and Italian Antarctic Programmes.

#### Contact Details

Antarctic Heritage Trust, International Antarctic Centre, 38 Orchard Road, Christchurch 8053

Private Bag 4745, Christchurch 8140, New Zealand.

T: +64 3 358 0212 E: info@nzaht.org W: www.nzaht.org

## ANTARCTIC HERITAGE TRUST STATEMENT OF REVENUE AND EXPENSES

For the year ended 30 June 2017

	Note	2017 NZD\$	2016 NZD\$
REVENUE			
<i>Revenue from exchange transactions</i>			
Membership		33,113	34,449
Provision of goods or services		90,927	26,463
Interest, dividends and other investment revenue		517,815	363,704
<i>Revenue from non-exchange transactions</i>			
Donations, fundraising and other similar revenue		1,567,311	878,237
Services in-kind	1	1,019,840	514,620
<b>Total Revenue</b>		<b>3,229,006</b>	<b>1,817,473</b>
EXPENSES			
Ross Sea Heritage Restoration Project		817,917	484,932
Share and Encourage initiatives, fundraising and promotion		409,736	361,186
Administration and governance		605,512	549,486
Total expenses incurred		1,833,165	1,395,604
Services in-kind	1	1,019,840	514,620
<b>Total Expenses</b>		<b>2,853,005</b>	<b>1,910,224</b>
<b>Surplus/(Deficit) for the year</b>		<b>376,001</b>	<b>(92,751)</b>

## STATEMENT OF FINANCIAL POSITION

As at 30 June 2017

	Note	2017 NZD\$	2016 NZD\$
CURRENT ASSETS			
Bank accounts and cash	2	595,200	729,948
Receivables	3	33,652	139,086
Inventory		5,835	7,343
<b>Total Current Assets</b>		<b>634,687</b>	<b>876,377</b>
NON CURRENT ASSETS			
Investments	4	10,017,231	9,510,481
Plant and equipment	5	34,823	31,215
<b>Total Non Current Assets</b>		<b>10,052,054</b>	<b>9,541,696</b>
<b>Total Assets</b>		<b>10,686,741</b>	<b>10,418,073</b>
CURRENT LIABILITIES			
Payables		108,893	105,852
Employee benefits		85,266	90,559
Deferred revenue (conditions attached)		567,528	672,609
<b>Total Liabilities</b>		<b>761,687</b>	<b>869,020</b>
<b>Net Assets</b>		<b>9,925,054</b>	<b>9,549,053</b>
EQUITY			
Accumulated surpluses		9,925,054	9,549,053
<b>Total Equity</b>		<b>9,925,054</b>	<b>9,549,053</b>



## ANTARCTIC HERITAGE TRUST STATEMENT OF CHANGES IN NET ASSETS/EQUITY

For the year ended 30 June 2017

	2017 NZD\$	2016 NZD\$
Accumulated surplus/total equity at beginning of the year	9,549,053	9,641,804
Surplus/(deficit) for the year	376,001	(92,751)
Accumulated surplus/total equity at end of the year	9,925,054	9,549,053

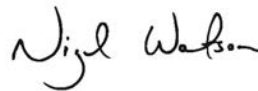
## STATEMENT OF CASH FLOWS

For the year ended 30 June 2017

	2017 NZD\$	2016 NZD\$
<b>CASH FLOWS FROM OPERATING ACTIVITIES</b>		
<i>Cash was received from/(applied to):</i>		
Donations, fundraising and other similar revenue	1,535,710	776,317
Revenue from members	33,113	34,449
Revenue from providing goods or services	92,435	27,211
Interest, dividends and other investment revenue	552,342	438,586
Net GST	(2,573)	14,177
Payment of employee related expenses	(1,078,609)	(856,438)
Payments to suppliers	(745,388)	(534,459)
<b>Net cash flows from/(applied to) operating activities</b>	<b>387,030</b>	<b>(100,157)</b>
<b>CASH FLOWS FROM INVESTING AND FINANCING ACTIVITIES</b>		
<i>Cash was received from/(applied to):</i>		
Payments to acquire plant and equipment	(15,028)	(10,027)
Funding taken from/(placed on) investment	(506,750)	503,449
<b>Net cash flows from/(applied to) investing and financing activities</b>	<b>(521,778)</b>	<b>493,422</b>
<b>Net increase/(decrease) in cash</b>	<b>(134,748)</b>	<b>393,265</b>
Opening cash	729,948	336,683
<b>Closing cash</b>	<b>595,200</b>	<b>729,948</b>
<b>This is represented by:</b>		
Bank accounts and cash	595,200	729,948



Mark Stewart  
Chair  
27 September 2017



Nigel Watson  
Executive Director  
27 September 2017



## ANTARCTIC HERITAGE TRUST STATEMENT OF ACCOUNTING POLICIES

For the year ended 30 June 2017

### A BASIS OF PREPARATION

The Antarctic Heritage Trust has elected to report in accordance with Tier 2 Public Benefit Entity (PBE) Accounting Standards for Not-for-Profit, and has taken advantage of all applicable reduced disclosure regime (RDR) disclosure concessions, on the basis that it does not have public accountability and annual expenses are under \$30m. These general purpose financial statements are prepared and presented in accordance with the PBE Standards. All transactions in the financial statements are reported using the accrual basis of accounting. The financial statements are prepared on the assumption that the Trust is a going concern and will continue in operation and meet its statutory obligations for the foreseeable future. Financial statements are presented in New Zealand dollars (\$) rounded to the nearest dollar, which is the Trust's functional currency.

### B REVENUE

Donations, fundraising and other similar revenue is recognised when it becomes receivable. If specific conditions are attached and repayment of the funds is required where those conditions are not met, the funds are treated as a liability until the conditions are met. Revenue from members is recognised in the year to which it relates. Revenue from providing goods and services comprises amounts received and receivable by the Trust on its own account. Interest revenue is recognised as it accrues, using the effective interest method. Dividend revenue is recognised when the dividend is declared.

### C DONATED GOODS AND SERVICES RECEIVED IN-KIND

The Trust recognises as income, the fair value of any donated goods and services received in-kind and utilised in the operations of the Trust. The fair value of these goods and services received in-kind is expensed as if the Trust had paid for them directly.

### D RESTORATION COSTS

All restoration costs and project expenditure relating to the conservation work in Antarctica is expensed as incurred.

### E BANK ACCOUNTS AND CASH

Bank accounts and cash comprise of cash and bank balances (including short term deposits) with original maturities of 90 days or less.

### F INVESTMENTS

Investments comprise of term deposits, shares, unit trusts or similar instruments held by the Trust directly or through managed funds and are stated at cost or valuation, with original maturities of 91 days or more.

### G INVENTORY

Inventory is stated at the lower of cost (using first in, first out) or market selling value.

### H PLANT AND EQUIPMENT

Plant and equipment are recorded at cost less accumulated depreciation.

### I DEPRECIATION

Depreciation is calculated allocating the cost of plant and equipment over their estimated useful lives, using diminishing value at rates of 2% to 67%. Depreciation methods, useful lives and residual values are reviewed at each reporting date and adjusted if there is a change in the expected pattern of consumption of the future economic benefits or service potential embodied in the asset.

### J FINANCIAL INSTRUMENTS

Financial assets and financial liabilities are recognised when the Trust becomes a party to the contractual provisions of the financial instrument. The Trust's financial assets of investments in equities are classified at fair value through surplus or deficit and its assets of cash and cash equivalents, short-term investments, receivables from exchange and non-exchange transactions and non-equity investments are classified as loans and receivables, which are non-derivative financial assets with fixed or determinable payments, not quoted in an active market. After initial recognition, they are measured at amortised cost using the effective interest method, less any allowance for impairment. The Trust's financial liabilities include trade and other creditors, employee entitlements and deferred revenue (in respect to grants whose conditions are yet to be complied with). All financial liabilities are initially recognised at fair value. The Trust assesses at the end of reporting date whether there is objective evidence that a financial asset is impaired, and if necessary, the carrying amount of the asset is adjusted in the surplus or deficit for the reporting period.

### K EMPLOYEE BENEFITS

Liabilities for wages and salaries, annual leave and accumulating sick leave are recognised in surplus or deficit during the period in which the employee provided the related services. Liabilities for the associated benefits are measured at the amounts expected to be paid when the liabilities are settled.

### L FOREIGN CURRENCY

Foreign currency transactions are translated into New Zealand dollars at the exchange rate on the date of the transaction. All monetary items held in foreign currency at year end are translated to New Zealand dollars at the closing exchange rate at the reporting date.

### M GOODS AND SERVICES TAX (GST)

All amounts are recorded exclusive of GST, except receivables and payables which are stated inclusive of GST (if any).

### N INCOME TAX

Antarctic Heritage Trust is wholly exempt from New Zealand income tax having fully complied with all statutory conditions for these exemptions.

### O CHANGES IN ACCOUNTING POLICIES

There have been no changes in accounting policies during the year (last year: adopted Tier 2 Public Benefit Entity (PBE) Accounting Standards for Not-for-Profit).



## ANTARCTIC HERITAGE TRUST NOTES TO THE FINANCIAL STATEMENTS

For the year ended 30 June 2017

### 1 SERVICES IN-KIND

Services in-kind, in relation to restoration project costs and the Trust's encourage and share initiatives, totalling \$1,019,840 (last year: \$514,620) have been provided from Antarctica New Zealand, Canterbury Museum, Cheshire Architects Ltd, Win Clark, Chris Cochran, DDB New Zealand Ltd, Field Torque Taranaki Ltd, Great Scott 2016 Ltd, Harcourt Insulation (2006) Ltd, International Conservation Services Pty Ltd (Australia), Macdonald & Lawrence Timber Framing Ltd (Canada), Michael Morrison and Z Energy Ltd.

	2017 NZD\$	2016 NZD\$
<b>2 BANK ACCOUNTS AND CASH</b>		
Cash on hand	2,462	1,947
Bank accounts (deposits held at call)	592,738	728,001
<b>Total bank accounts and cash</b>	<b>595,200</b>	<b>729,948</b>
<b>3 RECEIVABLES</b>		
Accounts receivable	1,344	74,824
GST	6,641	4,068
Interest to be received	25,667	60,194
<b>Total receivables</b>	<b>33,652</b>	<b>139,086</b>
<b>4 INVESTMENTS</b>		
Managed funds		
Cash and fixed interest	1,461,201	1,203,468
Property	535,896	392,771
Equities	1,827,848	1,141,794
<b>Total managed funds</b>	<b>3,824,945</b>	<b>2,738,033</b>
Term deposits	6,192,286	6,772,448
<b>Total investments</b>	<b>10,017,231</b>	<b>9,510,481</b>

### COMMITTED FUNDS

Funds committed to the Ross Sea Heritage Restoration Project		
Project conservation next year	671,875	942,986
Project conservation subsequent years	7,718,556	7,383,443
Funds committed for share, encourage and sustain initiatives	2,222,000	1,914,000
<b>Total bank accounts and cash and investments and</b>	<b>10,612,431</b>	<b>10,240,429</b>
<b>Total committed funds as at 30 June</b>		

The Ross Sea Heritage Restoration Project is a multi-year, multi-site heritage conservation project, conceived, managed and delivered by the Trust, as detailed in the Annual Report. 'Project conservation next year' represents budgeted expenditure in the next financial year for conservation works on the historic sites on Ross Island and at Cape Adare. 'Project conservation subsequent years' represents estimated expenditure for conservation works on the historic sites on Ross Island and at Cape Adare; and funds already committed towards an estimated 25 year fund for ongoing maintenance of the historic sites on Ross Island and Cape Adare.

## ANTARCTIC HERITAGE TRUST NOTES TO THE FINANCIAL STATEMENTS

For the year ended 30 June 2017

	2017 NZD\$	2016 NZD\$
<b>5 PLANT AND EQUIPMENT</b>		
Comprising furniture, fittings, office equipment and computers:		
Opening carrying value at cost	31,215	27,658
Purchases at cost	15,028	10,027
Disposals at book value, with nil proceeds/loss on disposal	(4,068)	-
Depreciation for the year	(7,352)	(6,470)
<b>Closing carrying value at cost</b>	<b>34,823</b>	<b>31,215</b>

There are no significant donated assets.

### 6 CATEGORIES OF FINANCIAL ASSETS AND LIABILITIES

The carrying amount of financial instruments presented in the statement of financial position are:

Financial assets – loans and receivables		
Bank accounts and cash	595,200	729,948
Receivables	27,011	135,018
Investments	8,189,383	8,368,687
Financial assets – at fair value through surplus or deficit		
Investments	1,827,848	1,141,794
<b>Total financial assets</b>	<b>10,639,442</b>	<b>10,375,447</b>
Financial liabilities – at fair value		
Payables	108,893	105,852
Employee benefits	85,266	90,559
Deferred revenue (conditions attached)	567,528	672,609
<b>Total financial liabilities</b>	<b>761,687</b>	<b>869,020</b>

### 7 CAPITAL COMMITMENTS

There are no capital commitments as at balance date (last year: nil).

### 8 CONTINGENCIES

There are no contingent assets, liabilities or guarantees as at balance date (last year: nil).

### 9 RELATED PARTY TRANSACTIONS

On 27 June 2017 a New Zealand limited company was incorporated, AHT Expedition Endurance Ltd, in which the Antarctic Heritage Trust is the holding company. At 30 June 2017 there were no transactions in this entity, therefore consolidated financial statements have not been prepared.

There were no material transactions involving related parties during the financial year (last year: nil).

### 10 EVENTS AFTER BALANCE DATE

In July 2017 \$300,000 was advanced for share capital in AHT Expedition Endurance Ltd.

There were no other events that have occurred after the balance date that would have a material impact on the financial statements (last year: nil).



## Independent Auditor's Report

### To the Members of Antarctic Heritage Trust

#### Report on the Audit of the financial statements

##### Opinion

We have audited the financial statements of Antarctic Heritage Trust on pages 21 to 25 which comprise the statement of financial position as at 30 June 2017, and the statement of revenue and expenses, statement of changes in net assets/equity and statement of cash flows for the year then ended, and notes to the financial statements, including a summary of significant accounting policies.

In our opinion, the accompanying financial statements present fairly, in all material respects, the financial position of the Trust as at 30 June 2017 and its financial performance and cash flows for the year then ended in accordance with Public Benefit Entity International Public Sector Accounting Standards (Not For Profit) Reduced Disclosure Regime issued by the New Zealand Accounting Standards Board.

##### Basis for Opinion

We conducted our audit in accordance with International Standards on Auditing (New Zealand) (ISAs (NZ)). Our responsibilities under those standards are further described in the *Auditor's Responsibilities for the Audit of the financial statements* section of our report. We are independent of the Trust in accordance with Professional and Ethical Standard 1 (Revised) *Code of Ethics for Assurance Practitioners* issued by the New Zealand Auditing and Assurance Standards Board, and we have fulfilled our other ethical responsibilities in accordance with these requirements. We believe that the audit evidence we have obtained is sufficient and appropriate to provide a basis for our opinion. Other than in our capacity as auditor we have no relationship with, or interests in, the Trust.

##### Other Information

The trustees are responsible for all other information included in an entity's Annual Report. The other information comprises the information included in the annual report, but does not include the financial statements and our auditor's report thereon.

Our opinion on the financial statements does not cover the other information and we do not express any form of audit opinion or assurance conclusion thereon.

In connection with our audit of the financial statements, our responsibility is to read the other information and, in doing so, consider whether the other information is materially inconsistent with the financial statements or our knowledge obtained in the audit or otherwise appears to be materially misstated. If, based on the work we have performed, we conclude that there is a material misstatement of this other information, we are required to report that fact. We have nothing to report in this regard.

#### Trustees' Responsibilities for the Financial Statements

The trustees are responsible on behalf of the Trust for the preparation and fair presentation of these financial statements in accordance with Public Benefit Entity International Public Sector Accounting Standards (Not For Profit) Reduced Disclosure Regime issued by the New Zealand Accounting Standards Board, and for such internal control as those charged with governance determine is necessary to enable the preparation of financial statements that are free from material misstatement, whether due to fraud or error. In preparing the financial statements, those charged with governance are responsible for assessing the Trust's ability to continue as a going concern, disclosing, as applicable, matters related to going concern and using the going concern basis of accounting unless the trustees either intend to liquidate the Trust or to cease operations, or have no realistic alternative but to do so.

#### Auditor's responsibilities for the Audit of the Financial Statements

Our objectives are to obtain reasonable assurance about whether the financial statements as a whole are free from material misstatement, whether due to fraud or error, and to issue an auditor's report that includes our opinion. Reasonable assurance is a high level of assurance, but is not a guarantee that an audit conducted in accordance with ISAs (NZ) will always detect a material misstatement when it exists. Misstatements can arise from fraud or error and are considered material if, individually or in the aggregate, they could reasonably be expected to influence the economic decisions of users taken on the basis of these financial statements.

A further description of the auditor's responsibilities for the audit of the financial statements is located on the External Reporting Board's website at: <https://www.xrb.govt.nz/standards-for-assurance-practitioners/auditors-responsibilities/audit-report-8/>

#### Restriction on use of our report

This report is made solely to the Trustees. Our audit work has been undertaken so that we might state to the Trustees those matters which we are required to state to them in an auditor's report and for no other purpose. To the fullest extent permitted by law, we do not accept or assume responsibility to anyone other than the Trustees for our audit work, for this report or for the opinion we have formed.

#### Grant Thornton New Zealand Audit Partnership



M D Stewart  
Partner  
Christchurch

17 October 2017

Chartered Accountants  
Member of Grant Thornton International Ltd

# TRUST DIRECTORY

#### PATRON-IN-CHIEF

Her Excellency The Right Honourable Dame Patsy Reddy, GNZM, QSO, Governor-General of New Zealand

#### PATRONS

June, Lady Hillary QSM

Mr Bob Norman QSO

#### TRUSTEES

Rt Hon. Paul East CNZM QC

Chair (to Sept 2016), Independent Trustee (to May 2017)

HE Datuk Mark Stewart PJN (Kerhormat)

Chair (from Sept 2016). Independent Trustee

Mr Anthony Wright

Deputy Chair. Director, Canterbury Museum

Mr Simon Allen

Independent Trustee

Mr Brook Barrington

Chief Executive and Secretary of Foreign Affairs and Trade (New Zealand)

Ambassador Scott Brown

United States Ambassador to New Zealand

Mr Andrew Coleman

Chief Executive, Heritage New Zealand (from Oct 2016)

Mr Roy Dillon

Independent Trustee

Ambassador Mark Gilbert

United States Ambassador to New Zealand (to Nov 2016)

Sir Chris Mace KNZM CNZM

Independent Trustee (to Sept 2016)

Ms Niamh McMahon

Honorary Consul General of Ireland

Sir Brian Roche

Chair, Antarctica New Zealand

HE Mr Jonathan Sinclair LVO

British High Commissioner to New Zealand

Professor Sir David Skegg KNZM OBE FRSNZ

Fellow and Past-President, Royal Society of New Zealand

Ms Mariska Wouters

President, New Zealand Antarctic Society

#### REPRESENTATIVE ATTENDEES

Mr Peter Beggs

Chief Executive, Antarctica New Zealand, representing Chair, Antarctica New Zealand

Ms Jillian Dempster

Head of the Antarctic and Southern Ocean Unit, Environment Division, representing the Ministry of Foreign Affairs & Trade

Ms Denise Flannigan

Honorary Vice-Consul General of Ireland

Ms Candy Green

Deputy Chief of Mission, representing the United States Embassy

Ms Nicola Jackson

Active Chief Executive, Heritage New Zealand

Ms Rosemary Paterson

Manager, Environment Division, representing the Ministry of Foreign Affairs & Trade

Mrs Helen Smith

Deputy High Commissioner, representing the British High Commission

#### TREASURER

PricewaterhouseCoopers

Represented by partner Murray Harrington

#### AUDITOR

Grant Thornton New Zealand Audit Partnership

Member of Grant Thornton International

#### SOLICITORS

Buddle Findlay

#### UK CONSULTANT

Martin Williams CVO OBE

#### STAFF

Nigel Watson LLB, BCom

Executive Director

Robyn Brunton

Finance Manager

Karen Clarke

Office Administrator

Francesca Eathorne MA LTCL RTSCA

General Manager Operations & Communications (from Nov 2016)

Al Fastier BRecMgt

Programme Manager, Ross Sea Heritage Restoration Project

Helen Keimig

Trust Administrator

Lydia McLean BSc MSciComm

Communications Administrator (to Nov 2016)

Lizzie Meek DipCD PGDipCon

Programme Manager - Artefacts

Susan Bassett BA Hons BAppSc

Lead Conservator (AU) (to Aug 2017)

Josefin Bergmark-Jiménez PGDip MA

Conservator (SE) (to May 2017)

Ciarán Lavelle BSc PGDip BSc MSc

Conservator (IE) (to May 2017)

Nicola Dunn-Stewart BA Hons Diploma Field Archaeology

Conservator (NZ) (from Nov 2016 to Aug 2017)

Stefanie Stott IB Dip, MA Hons St.A MA BSC

Conservator (IE) (to Nov 2016)

Martin Wenzel Dip EE

Conservation Carpenter (NZ) Antarctic Summer 2016-2017

Geoff Cooper

Conservation Carpenter (UK) Antarctic Summer 2016-2017

Doug Henderson

Conservation Carpenter (NZ) Antarctic Summer 2016-2017



# TRUST SUPPORTERS

▲ We welcome new supporters of our work and acknowledge and extend our appreciation for the long-term support of many organisations and individuals from around the world; a number of whom have provided their services pro-bono and/or at a reduced rate.

## CORE FUNDER

New Zealand Government (through Antarctica New Zealand, Ministry for Culture and Heritage and the Ministry of Foreign Affairs and Trade)

## CONSULTANTS, SERVICE PROVIDERS AND CONTRIBUTORS

AGCO (NZ)  
Air New Zealand (NZ)  
Alasdair Turner Photography (US)  
Allan Scott Family Winemakers (NZ)  
Antarctica New Zealand (NZ)  
Anthony Powell and Rachael Whareaitu (NZ)  
Bauer Media (NZ)  
Bluebridge (Strait Shipping) Ltd (NZ)  
Buddle Findlay (NZ)  
Building Research Association New Zealand (NZ)  
Canterbury Museum (NZ)  
Pip Cheshire, Cheshire Architects (NZ)  
Christchurch Airport (NZ)  
Win Clark (NZ)  
Chris Cochran (NZ)  
Commodore Airport Hotel Ltd (NZ)  
DDB New Zealand Ltd (NZ)  
Dulux New Zealand (NZ)  
Earth Sea Sky Ltd (NZ)  
Field Torque Taranaki Ltd (NZ)  
Grant Thornton (NZ)  
Great Scott 2016 Ltd (NZ)  
Hapag-Lloyd (DE)  
Harcourt Insulation (2006) Ltd (NZ)  
Dr David Harrowfield (NZ)  
Heritage Expeditions Ltd (NZ)  
IAG NZ Ltd (NZ)  
Julian Bickersteth, International Conservation Services Pty Ltd (AU)  
Jean & Thomas Harbeck Family Foundation Inc (US)  
Joseph Michael (NZ)  
Land Information New Zealand (NZ)  
Gordon Macdonald, Macdonald & Lawrence Timber Framing Ltd (CA)  
Massey Ferguson (NZ)  
Michael Morrison (UK)  
Murray and Margaret Turley (NZ)  
Nigel Watson (NZ)  
NZ Antarctic Society Inc. (NZ)  
NZ Lotteries Grant Board (NZ)  
Oceanwide Expeditions (NL)  
One Ocean Expeditions (CA)  
PricewaterhouseCoopers (NZ)

SIKA Ltd (NZ)  
Tait Communications (NZ)  
The February Foundation (UK)  
The Hermitage (NZ)  
Typhoo Tea Ltd (UK)  
United Kingdom Antarctic Heritage Trust (UK)  
Valerie Smith\*  
Whyte & Mackay Ltd (UK)  
Z Energy Ltd (NZ)

## MEMBERS OF THE 2016-2017 ANTARCTIC GOLD EXPLORERS

Leatitia Ballagh (NZ)  
Nicholas Bellamy (AU)  
Glenice & John Gallagher Foundation (NZ)  
Kevin Hickman (NZ)  
Joanna Hickman (NZ)  
Geoff Laurence (NZ)  
Mandy Loton (AU)  
Masfen Foundation (NZ)  
Bob McMillan\* (NZ)  
Peter Pauwels (NL)  
Neil and Barbara Robertson (NZ)  
Vivienne Stewart (AU)  
Mark Stewart and Ainsley Walter (NZ)  
Todd Stewart (NZ)  
Hoylen Sue (AU)  
Rodney Walshe (NZ)  
Bill and Sally Washington (NZ)  
Sue Webb (NZ)

## MEMBERS OF THE 2016-2017 ANTARCTIC SILVER EXPLORERS

John Blackie (UK)  
John Bowers (NZ)  
Emma Dunning (NZ)  
Paul Dykzeul (NZ)  
Nicola Hill and Dave Schaper and family (NZ)  
The Baird Foundation (Robert J A Irwin\*) (US)  
Retha Keenan (US)  
Penelope Lake (UK)  
Julian Lillico (NZ)  
Paul Martin (NZ)  
David Mayes (NZ)  
Peter O'Connor (UK)  
Keith and Annette Roberts (NZ)  
William Scott (CA)  
Sir James Wallace (NZ)  
Anne and Bill Wesp (US)  
Sue Winnett (US)

\*deceased



» 2017 Inspiring Explorers Isobel Ewing, Simon Lucas, Sylvie Admore and William Pike on the ship in the Lemaire Channel. © Nigel Watson.

## MEMBERS OF THE 2016-2017 ANTARCTIC BRONZE EXPLORERS

### EXPEDITION SOUTH AND HILLARY'S (TAE/IGY) HUT

Thank you to everyone who supported Expedition South and the Hillary's (TAE/IGY) Hut conservation project through sponsorship, donations and gifts and services.

## BEQUESTS

We are privileged that some of our community have chosen to endow part of their estate to Antarctic Heritage Trust upon their passing. We thank these members for this thoughtful contribution and acknowledge their generosity.

Olive Patricia (Stewart) Day  
Mandy Loton OAM  
Vivienne Stewart



HELP CONSERVE,  
SHARE AND  
ENCOURAGE  
THE SPIRIT OF  
EXPLORATION

Please consider donating,  
becoming a member or  
supporting the Trust  
by visiting **[www.nzaht.org](http://www.nzaht.org)**

**Antarctic Heritage Trust**

Private Bag 4745, Christchurch 8140, New Zealand  
International Antarctic Centre,  
38 Orchard Road, Christchurch 8053, New Zealand.  
T: + 64 3 358 0212  
E: [info@nzaht.org](mailto:info@nzaht.org)

**[www.nzaht.org](http://www.nzaht.org)**

Design by RGB Design and Print / [www.rgbdesign.co.nz](http://www.rgbdesign.co.nz)  
Print by Spectrum Print / [www.spectrumprint.co.nz](http://www.spectrumprint.co.nz)

Cover: Programme Manager Al Fastier leading the tractor journey  
'Expedition South' across New Zealand. © Peter Scott.

**Join us online**

